

Value AddOn Solution PPD Tray Control

Many companies use multiple-tray printers. The direct control of individual printer trays is easy to implement with the FSS Value AddOn Solution PPD tray control. With this AddOn the default printers and the corresponding tray can be specified for each report, version, environment and user / role. This is useful if different paper layouts and formats (blank, pre-printed with logo, payment slip, etc.) are present in each tray.

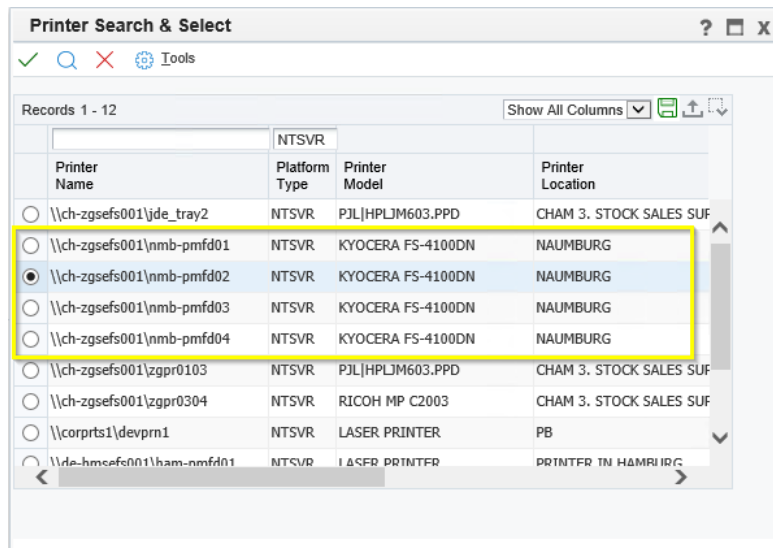


Image 1 Printer with multiple trays

Requirements and functionality

The setup of the FSS Value AddOn Solution PPD tray control is technically set up within a few hours. The customer must define the setup parameters (report, version, user / role, printer, tray, environment). After the setup is made JD Edwards EnterpriseOne always prints directly to the pre-defined printer tray.

Customer benefits / value added

With the possibility of defining printer trays for each report, version, environment and user / role, the effort of manual paper change in daily business is eliminated. For example, on the same printer, invoices on preprinted paper with payment slips, job receipts on pre-printed paper, and internal documents on plain paper can be printed without anyone having to change the paper in the printer.